

SWRC OFFER 04/22

ABOUT KALAS SPORTSWEAR



KALAS Sportswear is a leading manufacturer and distributor of premium cycling apparel throughout Europe. We are the custom cycle wear experts, producing premium quality kit in your own printed design. As well as custom ranges, we also have an extensive range of standard collection wear.

CHAMPIONS WEAR KALAS

“British Cycling is delighted to be working with Kalas. They have demonstrated a detailed understanding of the performance demands of such a technical partnership. Having a kit supplier with their in-depth knowledge and high level of service is invaluable to the Great Britain Cycling Team.” Iain Dyer, Head Coach, Great Britain Cycling Team.

KALAS is the choice of World and Olympic champions, national teams, Pro teams, and thousands of cyclists across the globe. In addition to British Cycling we are also the trusted supplier for some of the world’s leading companies, including Cadbury and Morgan Stanley. Our kit has been tested in some of the toughest races in the world, including Paris-Roubaix, Tour of Flanders and in 2017 will debut at the Tour de France.

DEVELOPMENT & INNOVATION

We evolve daily, and constantly seek new ways to improve our products and service. To develop the next generation of cycle clothes we work together with professional sports people and renowned research institutions, such as the Technical University of Liberec, creating kit that meets the highest standards of functionality and comfort.

SUMMARY

SWRC offer 04/22

Quote number: **QUO-25460-D8W3M3**

Offer valid until: **12.06.2022**

CODE	ITEM DESCRIPTION	PRICE (EXCL. VAT)	PCS	TOTAL
N50016-MS06	Jersey ACTIVE 06 Devan	£35.55	1	£35.55
N50055-ML06	Jersey L/S ACTIVE 06 FLANDERS	£47.25	1	£47.25
N60067-MA12	Bib shorts ACTIVE 12 Lycra	£40.95	1	£40.95
N50078-MS50	Jersey ELITE 50 Spinn	£42.30	1	£42.30
N50057-ML40	Jersey L/S ELITE 40 ANDORRA	£51.30	1	£51.30
N50128-MN05	Gilet ELITE 05 W&W Mission Flow	£59.40	1	£59.40
N60069-MA49	Bib shorts ELITE 49 Lycra POWER	£53.55	1	£53.55
N60266-MA48	Bib tights ELITE 48 ROUBAIX	£71.10	1	£71.10
N50016-LS06	Jersey ACTIVE 06 Devan WOMEN	£35.55	1	£35.55
N50055-LL06	Jersey L/S ACTIVE 06 FLANDERS WOMEN	£47.25	1	£47.25
N60067-LA14	Bib shorts ACTIVE 14 Lycra WOMEN	£40.95	1	£40.95
N50078-LS50	Jersey ELITE 50 Spinn WOMEN	£42.30	1	£42.30
N50057-LL40	Jersey L/S ELITE 40 ANDORRA WOMEN	£51.30	1	£51.30
N50128-LN05	Gilet ELITE 05 W&W Mission Flow WOMEN	£59.40	1	£59.40
N60069-LA50	Bib shorts ELITE 50 Lycra POWER WOMEN	£53.55	1	£53.55
N60266-LA53	Bib tights ELITE 53 ROUBAIX WOMEN	£71.10	1	£71.10
N70011-UF04	ARM warmers ACTIVE 04 Lycra	£13.95	1	£13.95
N70114-UF01	Summer cap ACTIVE 01 PES X4	£11.61	1	£11.61
N70532-UP01	Short gloves ELITE 01 Lycra	£13.95	1	£13.95
N70577-UP16	Long gloves PRO 16 W&W RainMem X6	£31.95	1	£31.95
N70047-UF16	SHOE covers ELITE 16 W&W RainMem X3	£25.65	1	£25.65
N70194-UP01	Winter cap ACTIVE 01 W&W Winter karo / FLEECE	£12.51	1	£12.51
N70161-UF01	Multifunctional TUBE 01	£8.01	1	£8.01

CONDITIONS AND TERMS

- the start-up cost for **a fully new design** created by our graphic designers is £99, which includes digital remake of logos and colours, and the printing process, this start-up cost is not charged on re-orders
- individual **printing of names**, flags or numbers: a surcharge of £4 for every item
- the shipment of the clothing is **free of charge** with orders above £500
- the manufacture time is between **7–9 weeks**, counting from the confirmation of your order. Delivery time takes between 3–5 calendar days from shipment date. A deposit of either 100% or 50% is required before the start of production.
- no additional changes in sizes or products can be made after the order confirmation
- we want to ensure you are completely happy with your new design. For this reason we include up to three rounds of design amends. If your design requires more than three rounds of changes then additional charges may apply
- you can see the complete Terms [here](#).

PRODUCTS



Jersey ACTIVE 06 | Devan

Code: N50016-MS06

PRICE (excl. VAT): £35.55

This elastic jersey is made from functional material in our standard close-fitting cut.

MATERIAL: Devan

- Comfortable and durable Devan material.
- Three-compartment back pocket.
- Long zipper makes getting dressed easier.



Jersey L/S ACTIVE 06 | FLANDERS

Code: N50055-ML06

PRICE (excl. VAT): £47.25

A long sleeve jersey made from a pleasant and insulated material created for unpredictable spring and autumn weather conditions.

MATERIAL: Flanders

- Innovative insulated material Flanders.
- Three-compartment back pocket with an ipod aperture.



Bib shorts ACTIVE 12 | Lycra

Code: N60067-MA12

PRICE (excl. VAT): £40.95

The cycling bib-shorts ACTIVE are constructed from functional Lycra fabric that provides light compression and freedom of movement.

MATERIAL: Lycra

- Stretchy Lycra fabric.
- Mesh bibs for excellent ventilation.
- Legs finished with silicone elastic cuff.
- Reflective details to increase visibility.
- SPEED Man pad.



Jersey ELITE 50 | Spinn

Code: N50078-MS50

PRICE (excl. VAT): £42.30

Best-selling jersey made from highly functional Spinn fabrics, which are characterised by their lightweight fabric, breathability and great wicking properties.

MATERIAL: Spinn

- Sleeves with bonded edge hem to reduce drag.
- Elastic inserts under the sleeves for a great anatomic fit.
- Three back pockets with a small opening for an earpiece cable.
- Reflective details to increase visibility



Jersey L/S ELITE 40 | ANDORRA

Code: N50057-ML40

PRICE (excl. VAT): £51.30

The insulated jersey Kalas designed for changeable weather. An indispensable accessory for any serious cyclist.

MATERIAL: ANDORRA

- Insulated and breathable Andorra material.
- Silicone waistband to prevent your top from riding up.
- Three-compartment back pocket with opening for headphones.
- Reflective detail to increase visibility.



Gilet ELITE 05 | W&W Mission Flow

Code: N50128-MN05

PRICE (excl. VAT): £59.40

If you are looking for a warm layer and at the same time a protection against wind and rain, this gilet could be perfect for you. Made from lightweight, three-layer membrane, the W&W Mission Flow gilet will become an indispensable part for your spring and autumn rides.

MATERIAL: W&W MISSION FLOW

- Constructed from the three layer-membrane.
- Water column: > 10 000 mm.
- Breathability: > 10 000 g / m² / 24 hr.
- Silicone waistband to prevent your top from riding up.
- Long underlaid zipper to protect against cold air and top overlap for increased comfort.
- Three-compartment back pocket.



Bib shorts ELITE 49 | Lycra POWER

Code: N60069-MA49

PRICE (excl. VAT): £53.55

These bibshorts are constructed from high quality, compressive Lycra Power fabric that demonstrates excellent elasticity and breathability. Mesh braces constructed in combination with solid straps on the front provide a perfect and precise fit.

MATERIAL: Lycra Power

- Elastic and breathable Lycra Power fabric that offers freedom of movement.
- Flat seams ensure maximum comfort.
- Anti-slip grippers around the legs to prevent riding up.
- Zoom X pad.



Bib tights ELITE 48 | ROUBAIX

Code: N60266-MA48

PRICE (excl. VAT): £71.10

The high-quality bib-tights protects your ankles, knees and hips against the cold and ensures perfect fit and comfortable ride.

MATERIAL: Roubaix

- Thermally insulated Roubaix material.
- Flat seams ensuring maximum comfort while riding.
- Reflective zippers on the outside of the legs for increased visibility.
- Zoom X pad.

Jersey ACTIVE 06 | Devan | WOMEN

Code: N50016-LS06

PRICE (excl. VAT): £35.55

This elastic jersey is made from functional material in our standard close-fitting cut.

MATERIAL: Devan

- Comfortable and durable Devan material.
- Three-compartment back pocket.
- Long zipper makes getting dressed easier.

Jersey L/S ACTIVE 06 | FLANDERS | WOMEN

Code: N50055-LL06

PRICE (excl. VAT): £47.25

A long sleeve jersey made from a pleasant and insulated material created for unpredictable spring and autumn weather conditions.

MATERIAL: Flanders

- Innovative insulated material Flanders.
- Three-compartment back pocket with an ipod aperture.



Bib shorts ACTIVE 14 | Lycra | WOMEN

Code: N60067-LA14

PRICE (excl. VAT): £40.95

The ladies cycling bib-shorts ACTIVE are constructed from functional Lycra fabric that provides light compression and freedom of movement.

MATERIAL: Lycra

- Stretchy Lycra fabric.
- Anti-slip grippers around the legs to prevent riding up.
- Mesh bibs for excellent ventilation.
- Reflective elements for increased visibility.
- SPEED Lady pad.



Jersey ELITE 50 | Spinn | WOMEN

Code: N50078-LS50

PRICE (excl. VAT): £42.30

Best-selling jersey made from highly functional Spinn fabrics, which are characterised by their lightweight fabric, breathability and great wicking properties.

MATERIAL: Spinn

- Sleeves with bonded edge hem to reduce drag.
- Elastic inserts under the sleeves for a great anatomic fit.
- Three back pockets with a small opening for an earpiece cable.
- Reflective elements for increased visibility.



Jersey L/S ELITE 40 | ANDORRA | WOMEN

Code: N50057-LL40

PRICE (excl. VAT): £51.30

The insulated jersey Kalas designed for changeable weather. An indispensable accessory for any serious cyclist.

MATERIAL: ANDORRA

- Insulated and breathable Andorra material.
- Silicone waistband to prevent your top from riding up.
- Three-compartment back pocket with opening for headphones.
- Reflective detail to increase visibility.



Gilet ELITE 05 | W&W Mission Flow | WOMEN

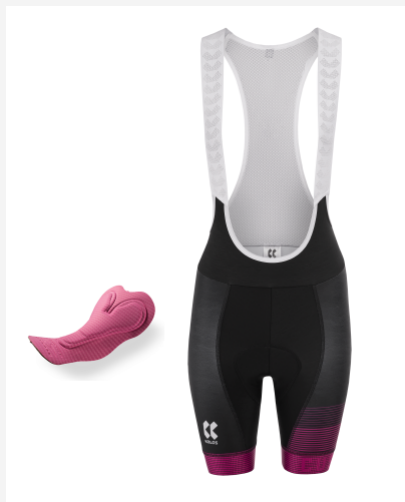
Code: N50128-LN05

PRICE (excl. VAT): £59.40

If you are looking for a warm layer and at the same time a protection against wind and rain, this gilet could be perfect for you. Made from lightweight, three-layer membrane, the W&W Mission Flow gilet will become an indispensable part for your spring and autumn rides.

MATERIAL: W&W MISSION FLOW

- Constructed from the three layer-membrane.
- Water column: > 10 000 mm.
- Breathability: > 10 000 g / m² / 24 hr.
- Silicone waistband to prevent your top from riding up.
- Long underlaid zipper to protect against cold air and top overlap for increased comfort.
- Three-compartment back pocket.



Bib shorts ELITE 50 | Lycra POWER | WOMEN

Code: N60069-LA50

PRICE (excl. VAT): £53.55

These bibshorts are constructed from high quality, compressive Lycra Power fabric that demonstrates excellent elasticity and breathability. Mesh braces constructed in combination with solid straps on the front provide a perfect and precise fit.

MATERIAL: Lycra Power

- Elastic and breathable Lycra Power fabric that offers freedom of movement.
- Flat seams ensure maximum comfort.
- Anti-slip grippers around the legs to prevent riding up.
- Zoom X Women pad.



Bib tights ELITE 53 | ROUBAIX | WOMEN

Code: N60266-LA53

PRICE (excl. VAT): £71.10

The high-quality bib-tights protects your ankles, knees and hips against the cold and ensures perfect fit and comfortable ride.

MATERIAL: Roubaix

- Thermally insulated Roubaix material.
- Flat seams ensuring maximum comfort while riding.
- Reflective zippers on the outside of the legs for increased visibility.
- Zoom X Women pad.



ARM warmers ACTIVE 04 | Lycra

Code: N70011-UF04

PRICE (excl. VAT): £13.95

The arm warmers made from the elastic material are an indispensable part of the summer accessories.

MATERIAL: Lycra

- light elastic Lycra material
- silicon rubber to prevent undesirable sliding



Summer cap ACTIVE 01 | PES X4

Code: N70114-UF01

PRICE (excl. VAT): £11.61

The summer race cap serves not only as a protection against the sun but is also created for training and racing in cooler conditions.

MATERIAL: LinenPES

- PES X4 fabric.
- Mesh panel at the back.



Short gloves ELITE 01 | Lycra

Code: N70532-UP01

PRICE (excl. VAT): £13.95

High-quality fingerless gloves for protecting your palms during summer.

MATERIAL: Lycra

- Foam padding for palm protection.



Long gloves PRO 16 | W&W RainMem X6

Code: N70577-UP16

PRICE (excl. VAT): £31.95

These wind and water-proof membrane gloves are a musthave accessory for chilly weather.

MATERIAL: RainMem X3

- Membrane W&W RainMem X3 material.
- Palm reinforced with synthetic leather.



SHOE covers ELITE 16 | W&W RainMem X3

Code: N70047-UF16

PRICE (excl. VAT): £25.65

The wind and water-proof shoe covers made from membrane fabrics are a staple part of any serious cyclist's kit.

MATERIAL: W&W Bridge

- Wind and water-proof material.
- Long zipper allows easy on/off over footwear.
- Reflective elements for increased safety.



Winter cap ACTIVE 01 | W&W Winter karo / FLEECE

Code: N70194-UP01

PRICE (excl. VAT): £12.51

This warm cap with increased protection at the front is an indispensable accessory under a helmet in cold wintry condition.

MATERIAL: W&W Winter Karo

- insulated fleece fabric
- front panel made from wind and water resistant membrane fabric
- flat seams



Multifunctional TUBE 01

Code: N70161-UF01

PRICE (excl. VAT): £8.01

Multifunctional tube ideal for all sports and leisure activities.

- Pleasant quick-dry material.
- Versatile use.

MATERIALS AND PADS



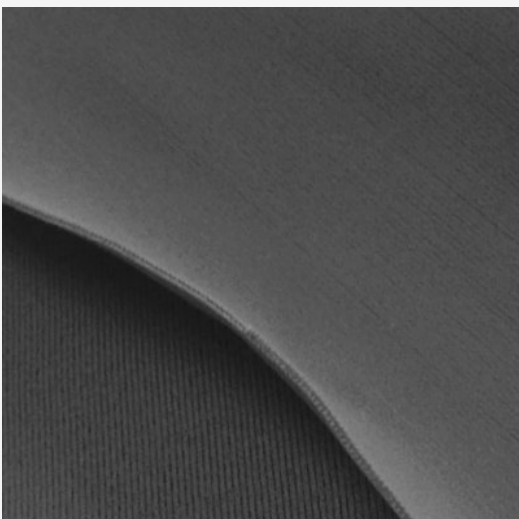
Devan

Weft-knitted polyester material with two-layer structure made from lightweight fabrics developed for functional cycle-wear.



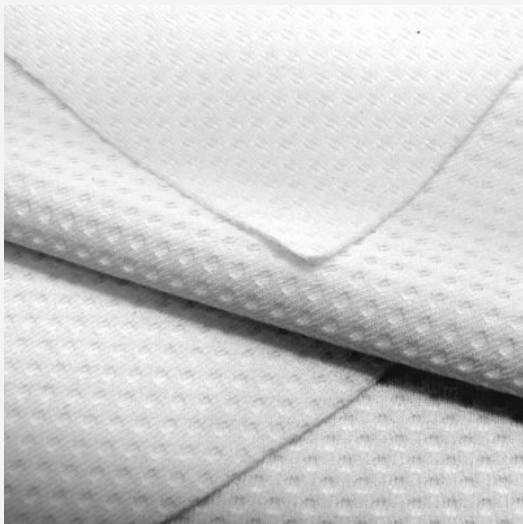
Flanders

Very pleasant material used for long-sleeve insulated jerseys with the reverse side that is brushed.



Lycra

The Lycra fabrics offer stretch and recovery power designed to help any cyclist to move and perform at their best, while feeling comfortable. This textile material is a perfect combination of light-weight, breathability, close-fit, shape retention and freedom of movement.



Spinn

Weft-knitted polyester material developed for highly functional cycle wear. Two-layer structure made from lightweight fabrics with the reverse side from special microfiber that effectively transfers the sweat to the top layer. The Spinn material is very breathable and provides a comfortable fit.



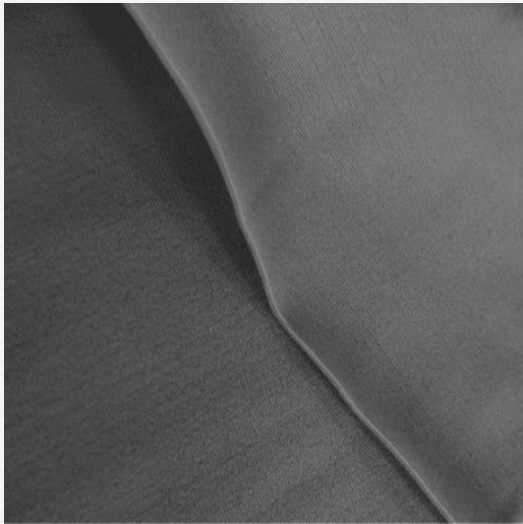
ANDORRA

Thermal performance stretch fabric designed to ensure high breathability and a constant thermal comfort. It provides long life stretch, superior shape retention, high pilling resistance, easy care.



W&W MISSION FLOW

Very lightweight three-layer functional membrane fabric that is wind and water-proof. The top layer of the fabric is very compact and abrasion resistant.



Lycra Power

The Lycra Power fabrics offer even better stretch and recovery power designed to help any cyclist to move and perform at their best, while feeling comfortable. This textile material is a perfect combination of light-weight, breathability, close-fit, shape retention and freedom of movement. In addition, it provides muscle support during bumps and thus prevents early exhaustion.



Roubaix

Revolutionary stretchy material containing LYCRA fibers developed for high quality sportswear with UV protection, while keeping your body dry and warm. This fabric has a special antibacterial treatment.

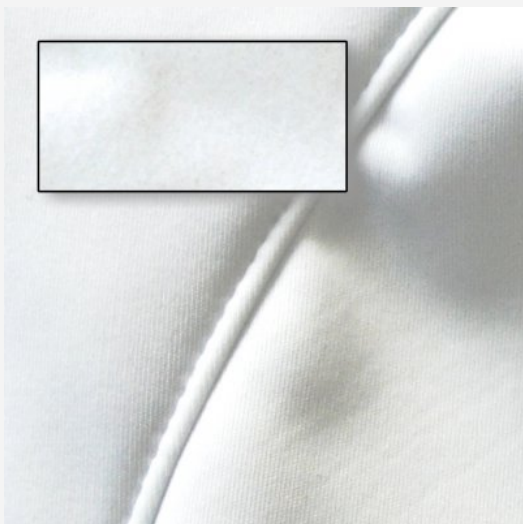
LinenPES

Fabric that keeps its colouring though frequently exposed to direct sunlight and dries quickly.



RainMem X3

The RainMem fabrics is fully printable cyclewear membrane that is wind and water-resistant as well as highly breathable. Technical parameters of the fabrics are: breathability: 11 000 g / m² / 24 hrs, water column: 10 000 mm.



W&W Bridge



W&W Winter Karo

Excellent wind and waterproof membrane fabric. Upper part from polyester knit with insulating fleece on the inner side. Ideal for cold weather. Specifications: Water column: 10.000 mm
Breathability: 11.000g/sq.m/24 hours



SPEED MAN

Men's elastic pad of the ELASTICI INTERFACE TECHNOLOGY® series in three dimensional design. It guarantees a good level of protection and comfort.

Important features:

- anatomic three dimensional shape
- dual density construction guarantees good degree of protection and comfort
- newly developed elastic material – E.I.T. CUBE – incredibly soft with microfiber and polyester fibres for maximum breathability
- specially designed perineal area to preserve natural blood circulation and to protect the sciatic nerve



ZOOM X

Multilevel elastic pad of the ELASTIC INTERFACE TECHNOLOGY® series made in an attractive design and developed to provide a great degree of protection and comfort.

Important features:

- elastic material from microfiber and polyester fibres for maximum breathability
- dual density construction guarantees a great degree of protection and comfort
- bacteriostatic material
- extremely soft side wings providing freedom of movement and excellent fit
- perforated foam ensuring increased ventilation and quick dry
- specially designed perineal area to preserve blood circulation and to protect the sciatic nerve



SPEED LADY



ZOOM X WOMEN

Multilevel elastic pad of the ELASTIC INTERFACE TECHNOLOGY® series made in an attractive design and developed to provide a great degree of protection and comfort.

Important features:

- elastic material from microfiber and polyester fibres for maximum breathability
- dual density construction guarantees a great degree of protection and comfort
- bacteriostatic material
- extremely soft side wings providing freedom of movement and excellent fit
- perforated foam ensuring increased ventilation and quick dry
- specially designed perineal area to preserve blood circulation and to protect the sciatic nerve

REFERENCES

MATHIEU VAN DER POEL

World cyclocross champion,
European MTB champion, winner
of Amstel Gold Race, Tour of
Flanders, Strade Bianche.





GREAT BRITAIN CYCLING TEAM

Leading federation renowned for
cutting-edge innovation leading
to outstanding performance
across many disciplines.

CONTACT

Lenka Mullender

 +420 702 075 797

 lenka.mullender@kalas.co.uk

 www.kalas.co.uk